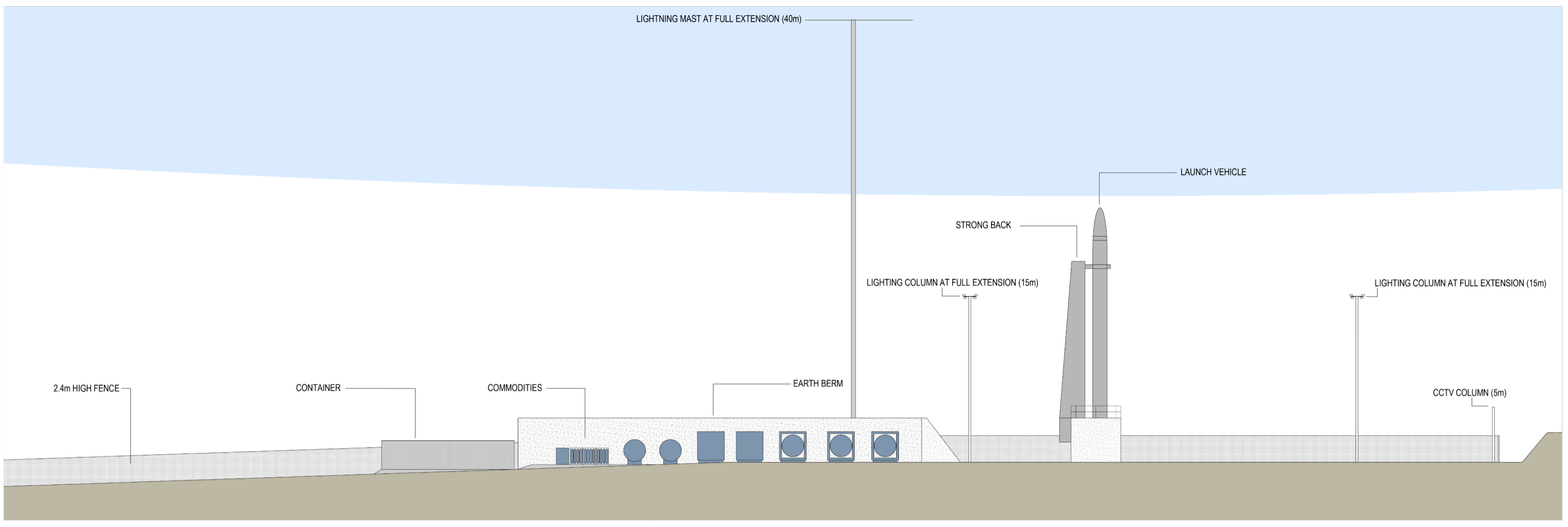


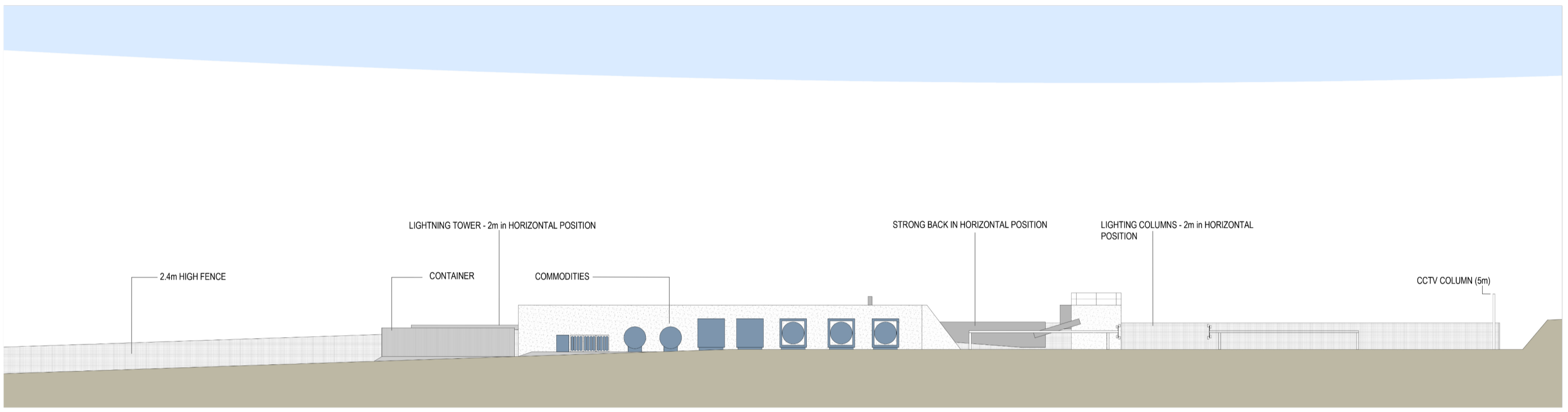
DRAWING EXTRACT - LAUNCH PAD COMPLEX SITE PLAN AS PROPOSED

--- APPROVED FOOTPRINT

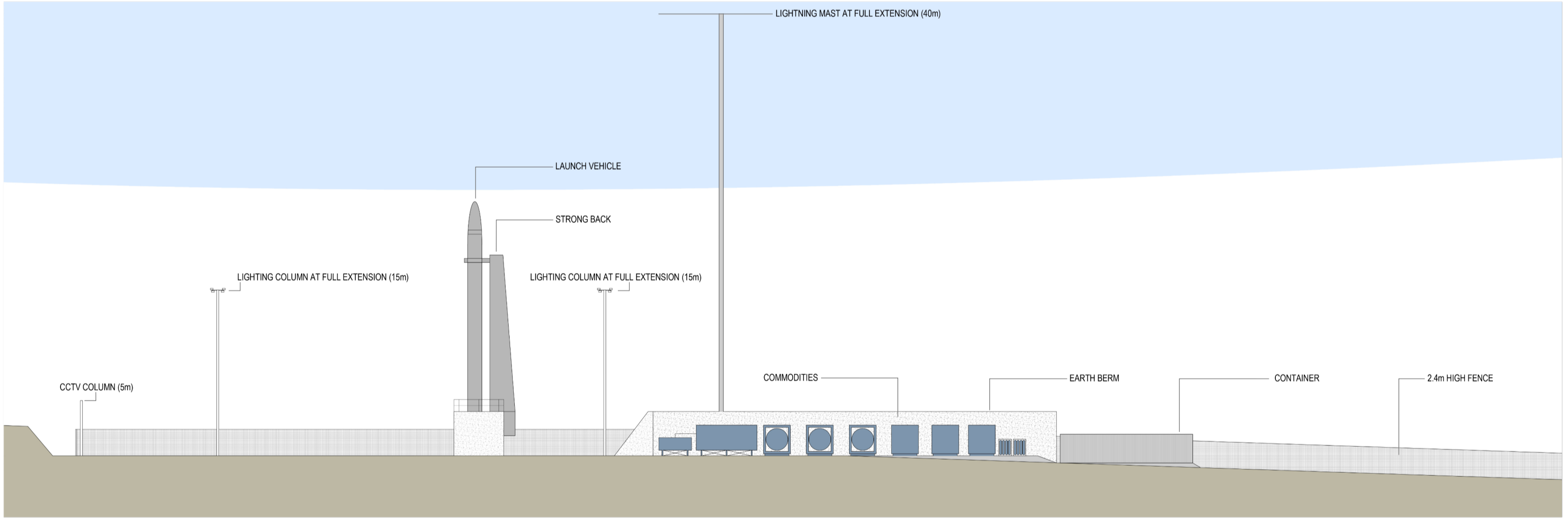
- FOOTPRINT SITS WITHIN THE APPROVED PLANNING FOOTPRINT
- ACCESS TRACK & RAIL TRACK LINK HAVE BEEN RATIONALISED TO A SINGLE TRACK, REDUCING PEAT DISTURBANCE AND VISUAL IMPACT
- LIGHTING TOWER & LIGHTING COLUMNS, NOW FULLY RETRACTABLE IN NON-LAUNCH STATE, FURTHER REDUCING VISUAL IMPACT
- AREAS OF HARD STANDING HAVE BEEN REDUCED, REDUCING PEAT DISTURBANCE AND ENVIRONMENTAL IMPACT



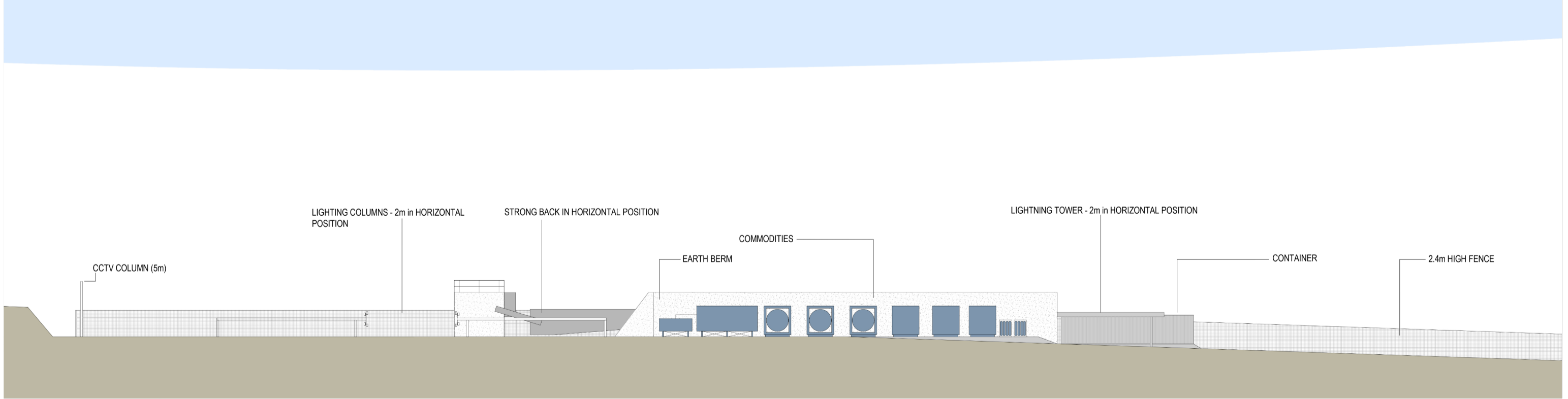
DRAWING EXTRACT - LAUNCH PAD COMPLEX WEST ELEVATION (OPERATIONAL STATE)



DRAWING EXTRACT - LAUNCH PAD COMPLEX WEST ELEVATION (NON-OPERATIONAL STATE)



DRAWING EXTRACT - LAUNCH PAD COMPLEX EAST ELEVATION (OPERATIONAL STATE)



DRAWING EXTRACT - LAUNCH PAD COMPLEX EAST ELEVATION (NON-OPERATIONAL STATE)